



PERMALOCK

The Aluminum Shingle Company

Wall Data Sheet

Main Features

The PermaLock Aluminum Shingle is a maintenance free, prefinished and extremely strong 18" wide shingle. Made from 95% recycled material in the USA, this shingle comes with a transferable lifetime warranty and is Cool Roof Rated.



Pictured
Plain Mill Smooth



Materials

Aluminum, Zinc, Copper

Specifications

- Uses: Roof, Wall
- Fasteners: Concealed
- Applications: Solid Sheathing
- Coverage: 9.25" tall x 18" wide
- 96 Shingles per square (40lbs/sq)
- Minimum Roof Pitch 3:12
- Kynar 500 / Hylar 5000 premium coating

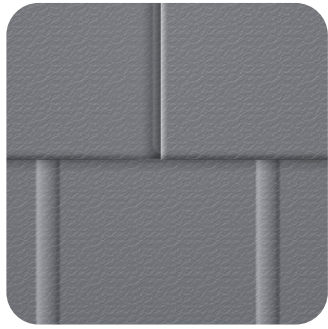
Warranty & Testing

- Lifetime transferable available
- 165 mph wind speed warranty
- Fire - UL 790 Class A
- Hail - UL 2218 Class 4
- Uplift - UL 997

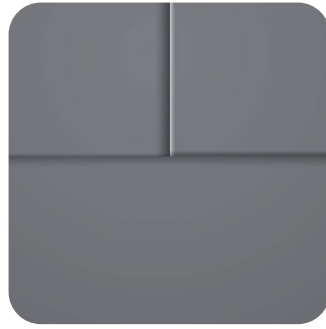
PermaLockRoofing.com | 877-319-7999

See website for details, specifications, and warranty information. © The Aluminum Shingle Company

High Performance Finish



EMBOSSSED



SMOOTH



EMBOSSSED SLATE



SLATE

Color Options

Custom colors are available upon request. Also available in zinc and copper.



DRIFTWOOD CEDAR



TUDOR BROWN



REGAL BROWN



TERRA COTTA RED



CLASSIC GREEN



DAWN GRAY



CHARCOAL GREY



BLACK

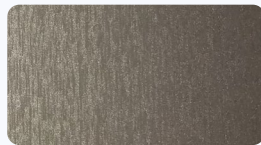


PLAIN MILL

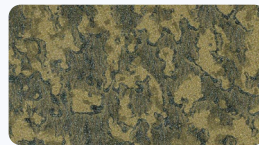
Premium Option



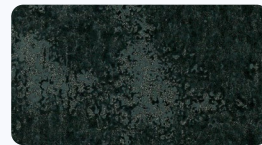
K5 SERIES



ORE SERIES



BRAZEN SERIES



MIDNIGHT SERIES